

PUBLIC



SVĚT
WEBDISPEČINKU
11/2025

www.webdispecink.cz

CONTENTS OF THE ISSUE

Travel orders - view compensation	3
Adding the identified trailer to the vehicle tree	4
We are preparing a new version of the WD Fleet 1.10.0 application	5
End	10



Redakce

Adresa redakce:

Princip a.s.

Na Vítězné pláni 1719/4

140 00 Praha 4 – Nusle

Redakční email:

webdispecink.tlm@eurowag.com

NEWS – Travel orders – view compensation

The following items have been added to the print reports for travel orders:

- Fuel cost per 1 km
- Compensation amount per 1 km of business travel
- Total km
- Total compensation for use of private vehicle

This items will only appear in print reports if the vehicle settings specify Ownership type - private and the Amount of compensation for business mileage.

WORKING TRIP STATEMENT

8. Report on the outcome of the working trip was submitted on _____

Agrees with the mode of realization _____

Date and signature of the employee in charge _____

9. Expenditure slip receipt

number _____

The charged replacement was checked and changed to _____

Fuel price per km K€ 2,54

Amount of compensation per 1 km of business travel K€ 10

Total km km 897

Total compensation for the use of a private vehicle K€/km 11249,28

Including other specified costs K€ 12382,28

Amount in company currency - Meal allowance K€ 1113,00

The advance paid K€ _____

Surcharge - Overpayment K€ _____

Accounting regulation

Debits	Credits	Amount	Centre	Order

Note on booking

Vehicle: 9A

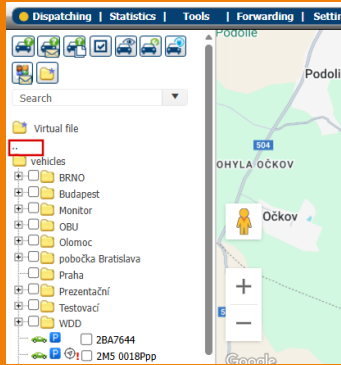
Number of document	Vehicle	Driver	Personal number	From	P

9A 02.10.2025 07:39:31

NEWS – Adding the identified trailer to the vehicle tree

The option to display the license plate number of the trailer attached to the vehicle has been added to the vehicle tree display settings (list of drivers and virtual folders).

You can access the vehicle tree appearance settings by clicking on the dots above the vehicles.



The screenshot shows the 'Vehicle tree appearance setup' dialog box. The 'List of vehicles' option is selected, and the 'show Search' and 'instantiation of FM in Search' options are checked. The background shows a map and a list of vehicles.

Vehicle tree appearance setup:

- Vehicle tree
- List of vehicles
- List of drivers
- Virtual folders only
- LPN
- LPN semi-trailer
- LPN brief description
- LPN default driver
- LPN most recent driver
- LPN Most recent driver brief description
- brief description LPN
- brief description
- show "Search"
- instantiation of FM in "Search"

Log book - G...

Day	time from	time to	trip start	trip end	km	odometer end km	trip duration	in each driving mode	waiting period	driver
Business:	0	0,00								
Private:	0	0,00								
Total:	0	0,00			0,00	0,00				

Consumption / 100 km:
Average fuel price:

NEWS – We are preparing a new version of the WD Fleet 1.10.0 application

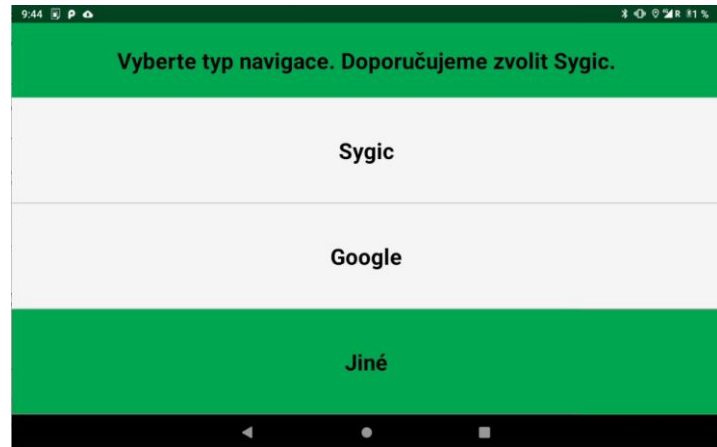
In the near future, we will be preparing a new version of the WD Fleet 1.10 application for you.

You can look forward to these new features.

Navigation type Other

A new navigation type, "Other," has been added to the existing navigation options, allowing you to select a different type of navigation depending on the mobile device you are using.

We will then transfer only the coordinates of the selected stop to this navigation system.



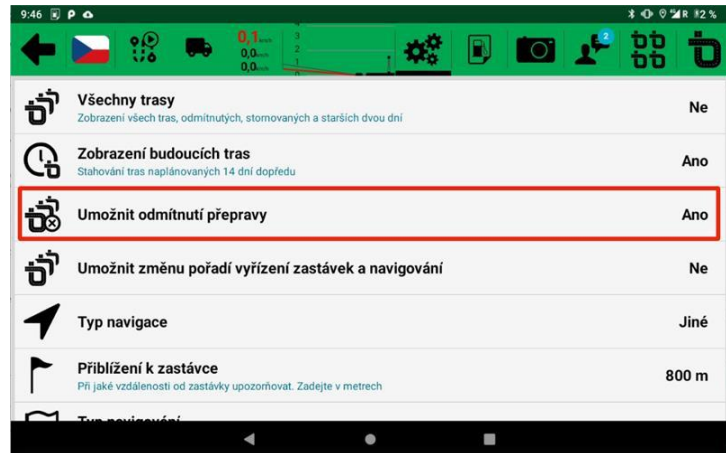
NEWS – We are preparing a new version of the WD Fleet 1.10.0 application

Settings Refusal of transport

In response to numerous customer requests, we have added settings for refusing transportation.

It is now possible to disable the option for drivers to refuse transportation in Settings - Basic Settings - Allow Refusal of Transportation Yes/No.

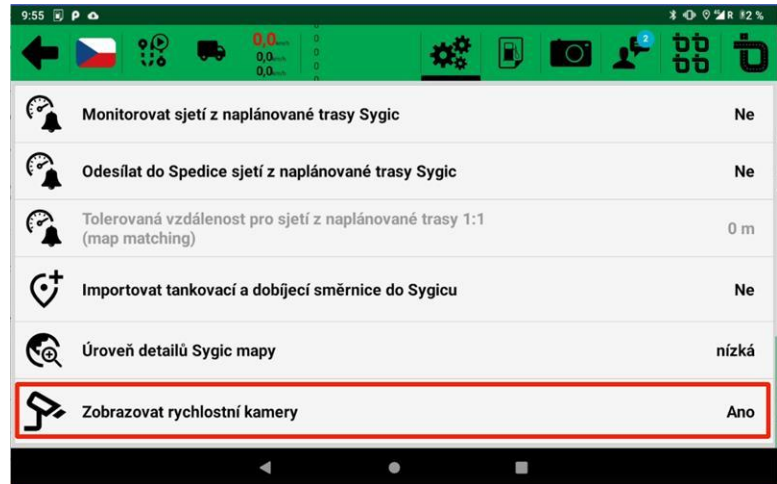
The settings can also be configured in the Terminal tab in the vehicle settings.



NEWS – We are preparing a new version of the WD Fleet 1.10.0 application

Disabling speed camera display

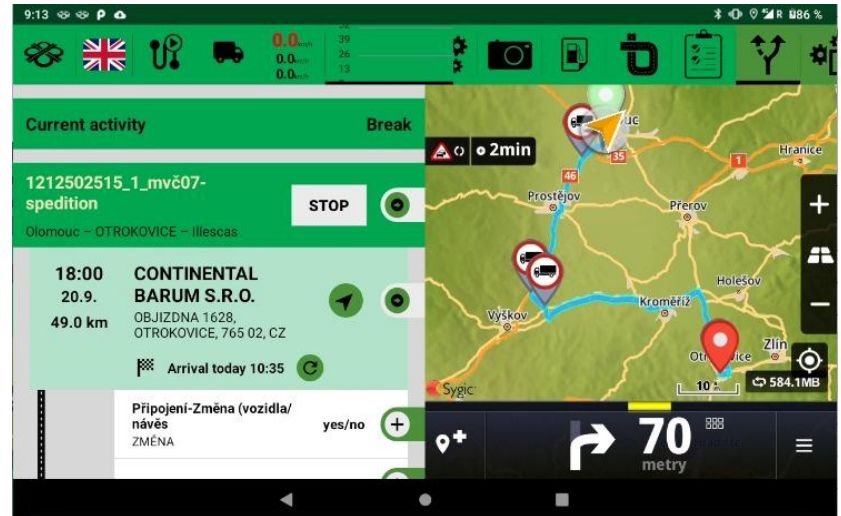
In some countries, it is not possible to use navigation systems with speed camera display (e.g., Germany). However, within Sygic navigation, we can disable the display of speed cameras, and for simplicity's sake, we have also added this option to the WD Fleet settings. Settings - Device settings - Show speed cameras Yes/No.



NEWS – We are preparing a new version of the WD Fleet 1.10.0 application

Other changes

- Added support for Android 15
- Updated Sygic navigation to version 25.2.10
- Fixed switching between day/night
- Fixed displaying polyline route lines
- Improved processing of requests in offline mode
- Improved location tracking with GNSS satellites
- Improved detection of internet connection
- Various bug fixes and stability improvements





END

We hope that you have found useful information in the articles in this issue of the magazine that will make working with your fleet even easier.

Thank you for your trust.

CONTACTS

System provider

PRINCIP a.s.
Na Vítězné pláni 1719/4
140 00 Praha 4
IČ 41690311 DIČ CZ41690311

Working hours

Mo - Fr 07:30 – 16:30

SW technical support

Princip a.s. – establishment Olomouc
Ladova 389/10
779 00 Olomouc

Phone: +420 233 555 111

Email:

webdispecink.tlm@eurowag.com
www.webdispecink.cz

