

PUBLIC



[www.webdispecink.cz](http://www.webdispecink.cz)

## CONTENTS OF THE ISSUE

New column – Percentage of tank capacity	3
Displaying input statuses on the map	4
Shutdown of 2G network in Sweden	7
Cooperation with CleverFarm	8
PF 2026	9
End	10



Redakce  
Adresa redakce:  
Princip a.s.  
Na Vítězné pláni 1719/4  
140 00 Praha 4 – Nusle

Redakční email:  
[webdispecink.tlm@eurowag.com](mailto:webdispecink.tlm@eurowag.com)



# NEWS – Displaying input statuses on the map

We have modified the view of log book entries—opening/closing boxes, etc.—on the map. The condition for display is the input setting for the given vehicle and also the input display setting on the map.

The display of input statuses corresponds to the statistics Collect data / sensors – Log book Inputs

The screenshot shows a web application interface for vehicle management. The interface includes a map, a vehicle list, and a settings panel. A blue arrow points from a vehicle in the list to the settings panel.

**Information about vehicle**

LPR:	
Driver:	
PLOC:	
Street:	
km:	79235,57
Est:	306,72 l

**Change display based on speed**

over 0	km/h	<input type="checkbox"/>	
over 50	km/h	<input type="checkbox"/>	
over 130	km/h	<input type="checkbox"/>	

**Change display based on input status**

Input	State	Change	Description
<input type="checkbox"/> Input 1	▼	<input type="checkbox"/>	<input checked="" type="checkbox"/>
<input checked="" type="checkbox"/> Input 2	Obavřeno	<input checked="" type="checkbox"/>	<input checked="" type="checkbox"/>
<input type="checkbox"/> Input 3	NE	<input checked="" type="checkbox"/>	<input checked="" type="checkbox"/>
<input type="checkbox"/> Input 4	Zapnuto	<input checked="" type="checkbox"/>	<input checked="" type="checkbox"/>

**Change view according to tool/tasks**

<input type="checkbox"/>		
<input type="checkbox"/>		

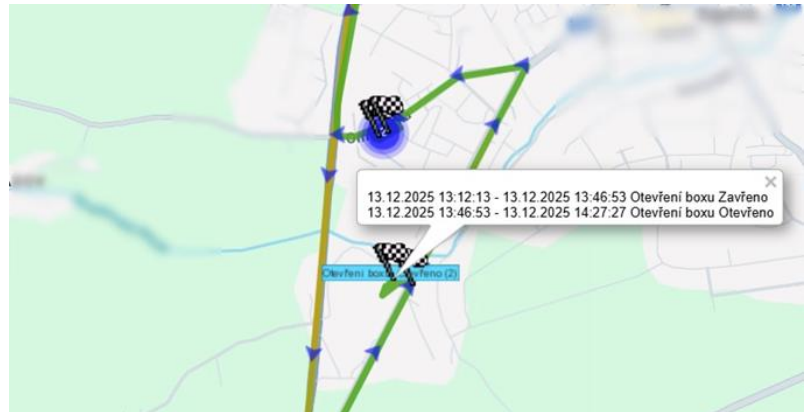
**Change view according to charging**

<input type="checkbox"/>		
--------------------------	--	--



## NEWS – Displaying input statuses on the map

When you zoom in on a specific location, it breaks down into individual locations, and when you click on a rectangle, you can view the history of the input statuses at that location.



## NEWS – Shutdown of 2G network in Sweden

We would like to inform you that at the end of 2025, support for the 2G network will be phased out in Sweden.

This means that you may not be able to see the current position of a vehicle if it is located in Sweden and if you have an older type unit.

For this reason, we recommend upgrading your units to Vetronics 871 or OBU units.



## NEWS – cooperation with CleverFarm

One solution for your entire fleet – that's cooperation between  
**EUROWAG AND CLEVERFARM**

CleverFarm provides software directly for farmers: automation of activities, LPIS, costs, connection to payroll and accounting.

Take advantage of a 2-month free trial!

For more information, contact your sales representative.





## PF 2026

We wish you a peaceful  
Christmas holiday full of joy  
and time spent with your  
loved ones.

We wish you good health in  
the new year.

We look forward to working  
with you next year.

The Webdispecink team





END

We hope that you have found useful information in the articles in this issue of the magazine that will make working with your fleet even easier.

Thank you for your trust.

## CONTACTS

### System provider

PRINCIP a.s.  
Na Vítězné pláni 1719/4  
140 00 Praha 4  
IČ 41690311 DIČ CZ41690311

### Working hours

Mo - Fr 07:30 – 16:30

### SW technical support

Princip a.s. – establishment Olomouc  
Ladova 389/10  
779 00 Olomouc

Phone: +420 233 555 111

Email:

[webdispecink.tlm@eurowag.com](mailto:webdispecink.tlm@eurowag.com)  
[www.webdispecink.cz](http://www.webdispecink.cz)

